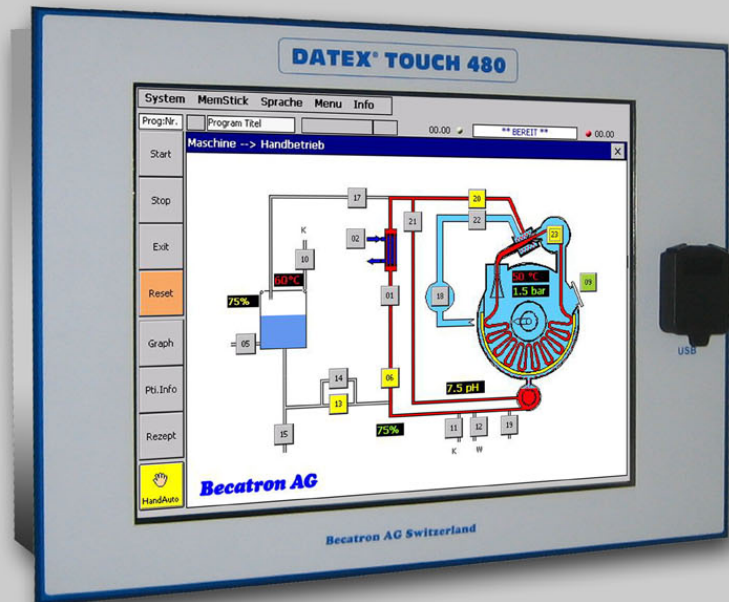


Datex Touch 480



Control and visualisation with high comfort

The Datex Touch 480 powered with the real-time operating system Windows CE is an efficient control unit for the automation of dyeing machines. The large TFT colour display with touch-screen offers the users comfort and all possible information at a glance. Be it the complete process visualisation, recording of temperature curves, levels, pump speeds, recipe and lot information, this control unit leaves nothing to be desired. The most varied interfaces and modular extensions enable flexible connection of process peripherals. One USB port is provided at the front. It is thus easily accessible and can be used for data transfer.

Becatron AG

Frauenfelderstrasse 35
8555 Müllheim / Switzerland
Phone +41 (0)52 763 33 88
Fax +41 (0)52 763 33 73
Email info@becatron.ch
Web www.becatron.ch

Application

- User interface in Windows Design
- Input / administration of dyeing programmes and functions
- Integrated programmable PLC
- Block programming possible (i.e. a process can be made up of several blocks, e.g. pre-washing / dyeing / after-treatment)
- All information can be viewed at a glance
- Calculation and graphical display of the entire dyeing process
- Online operator instructions
- Regulation of temperature, time, speed, pressure, flow rate, pH, level, additional containers, combined waste water, etc.
- Manual pump speed and coiler regulation
- User administration for logging the operator on and off via the transponder or the barcode (optional)
- Activating the functions in the manual mode
- Individual machine visualisation with all process values, levels, valves, etc.

Concept

Datex Touch 240 is suitable for all types of dyeing machines. A wide range of applications can be easily implemented using this configurable and modular concept.

TFT Touchscreen

The self-explanatory menu navigation has now become a lot easier. Data can be read and inputs can be easily modified on the 5.7-inch TFT colour display.

Windows CE.net

The futuristically designed Windows CE.net has been especially developed for industrial applications and is thus highly reliable.

Remote maintenance

The integrated web server enables worldwide support. Similarly, the device also features an FTP server for quick data exchange as well as diagnostic tools.

Interfaces

Dual USB Port for copying and saving data, etc. In addition, various peripheral devices such as a mouse, a keyboard, a barcode scanner, etc. can also be connected.

Networks

There are various options for connecting the Datex Touch 35 control system to the program editor or the BeCAmaster control panel. This connection can be established via Ethernet TCP/IP and/or a serial port using FO or RS-422/485. Wireless networking of the devices is also possible using Bluetooth or WLAN (Wireless 802.11b/g).

Specification

Art.-no.

GEB00136

Case

300 x 215 x 80 mm (w x h x d)

Display

10.4" TFT color display 640 x 480.

Languages

Several languages are supported

Memory

Flash: 32 – 64 Mbyte
RAM: 16 – 128 Mbyte

I/O

Until to 64 digital inputs
Until to 64 digital outputs (Rel. 2A)
1 PT 100 input
Until to 4 analogue inputs 0/4-20mA
Until to 4 analogue outputs 0/4-20mA
4 system inputs

Interfaces

2 x RS232
1 x Ethernet RJ45 (Optional)
2 x USB
1 x I2C-Bus
1 x CAN-Bus (Optional)

Power supply

24V DC, 1.5A

Ambient temperature

Operation: 0-50° C (32-122 °F)
Relative humidity: 15 –95%
no condensation

