

Datex Touch 35



Small and flexible

Datex Touch 35 is the smallest control unit in the Becatron Touch Family.

Different versions of this extremely flexible control unit can be loaded, and can be used as an independent control unit for laboratory dyeing machines in the form of a time/temperature controller, a pH controller, a combined waste water controller, a level recording terminal with pump controller, etc.

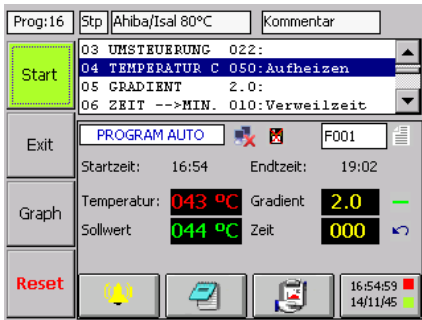
In addition, the compact control unit is equipped with numerous interfaces and is also available with network-compatible hardware.

Becatron AG

Frauenfelderstrasse 35
8555 Müllheim / Switzerland
Phone +41 (0)52 763 33 88
Fax +41 (0)52 763 33 73
Email info@becatron.ch
Web www.becatron.ch

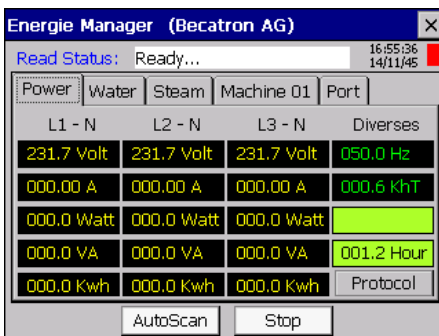
Application

- A simple time/temperature control system with three additional functional outputs



Time-/Temperatur controller

- Can be used as a pH controller
- A combined waste water controller version
- Energy management software version



Energy management

- A terminal for level recording and pump controller
- Customised software can be switched to this Windows CE.net platform easily and quickly
- Network-compatible hardware available
- Dual USB port for peripheral devices
- Several devices can be inter-networked into one TCP / IP network

Concept

Various software such as time/temperature control system, pH controller, a combined waste water controller, a level recording terminal with a pump controller, etc. can be installed on Datex Touch 35.

TFT Touchscreen

The self-explanatory menu navigation has now become a lot easier. Data can be read and inputs can be easily modified on the 3.5-inch TFT colour display.

Windows CE.net

The futuristically designed Windows CE.net has been especially developed for industrial applications and is thus highly reliable.

Remote maintenance

The integrated web server enables worldwide support. Similarly, the device also features an FTP server for quick data exchange as well as diagnostic tools.

Interfaces

Dual USB Port for copying and saving data, etc. In addition, various peripheral devices such as a mouse, a keyboard, a barcode scanner, etc. can also be connected.

Networks

There are various options for connecting the Datex Touch 35 control system to the program editor or the BeCAMaster control panel. This connection can be established via Ethernet TCP/IP and/or a serial port using FO or RS-422/485. Wireless networking of the devices is also possible using Bluetooth or WLAN (Wireless 802.11b/g).

Specification

Art.-no.
GEB00147

Case
166 x 106 x 44 mm (w x h x d)

Display
3.5" TFT color Display (320 x 240) with Touchscreen

Languages
Several languages are supported

Memory
Flash: 32 – 64 Mbyte
RAM: 16 – 128 Mbyte

I/O
1 analogue 0/4-20mA or PT 100 input
1 analogue output 0/4-20mA
2 digital inputs
5 digital outputs (Relais 2A)

Interfaces
2 x RS232
1 x Ethernet RJ45 (Optional)
2 x USB
1 x I2C-Bus
1 x CAN-Bus (Optional)

Power supply
230V AC, 30mA

Ambient temperature
Operation: 0-50° C (32-122 °F)
Relative humidity: 15 –95%
no condensation

